

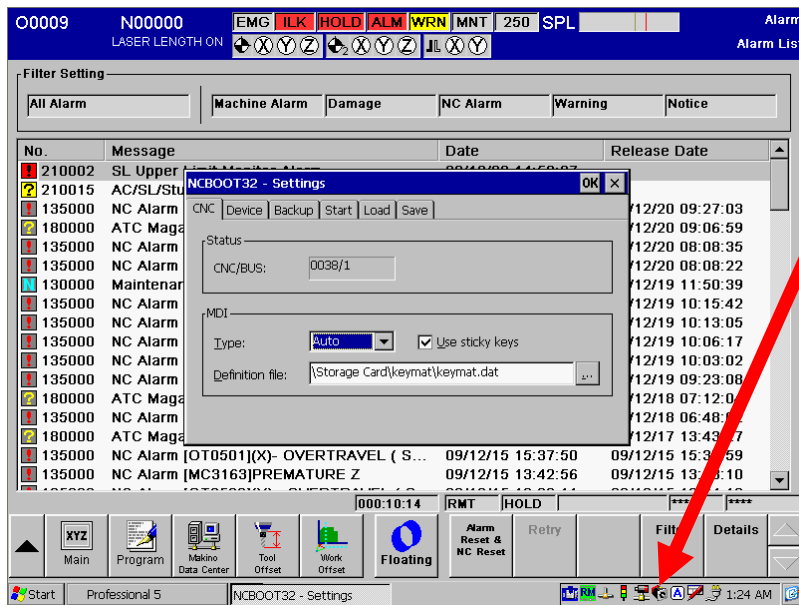
REMOTE MACHINING™


REMOTE CNC ACCESS

Makino Pro 5 Remote Machining Uninstall Guide

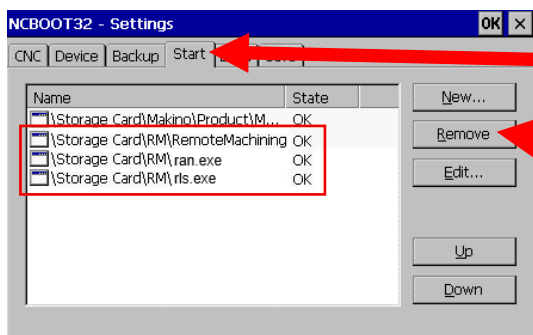
This procedure will disable and remove all Remote Machining products from your Makino Pro5 Mill.

Step #1. Disable Remote Machining Startup



Locate the **NCBOOT32** icon  in the lower right system tray area and tap to open the **NCBOOT** configuration window.

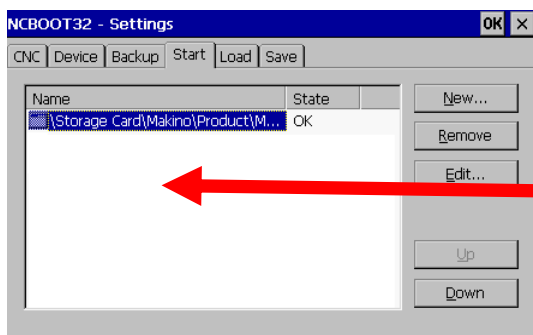
If the system tray is not visible, on the controller keypad, hold down the **CTRL** key and hit the **AUX** key twice, then release the **CTRL** key. The system tray will appear.



Tap the **Start** tab.

Tap each entry listed in the **RM** folder as shown and tap **Remove**.

There may be only one or there may be up to three entries. You must **Remove** each one.



Tap **OK** once no **RM** entries are shown

Step #2. Shutdown/Exit/Remove Remote Machining Makino Pro5 Applications

Locate any **Remote Machining Makino Pro5** applications running in the system tray in the lower right corner of the controller screen. If the system tray is not visible, on the controller keypad, hold down the **CTRL** key and hit the **AUX** key twice, then release the **CTRL** key. The system tray will appear.



To shut down **Remote Machining**:

Tap the  icon. Tap **Exit** from the pop-up menu

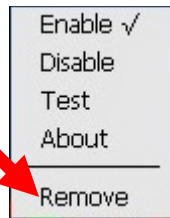


Tap **Yes** to confirm shutdown



To shut down **Remote Alarm Notification**:

Tap the  icon. Tap **Remove** from the pop-up menu

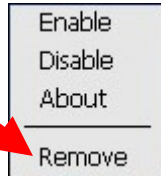


Tap **Yes** to confirm removal.

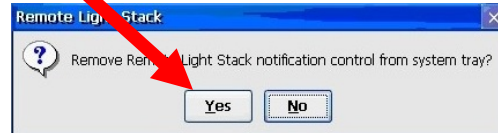


To shut down **Remote Light Stack Notifier**:

Tap the  icon. Tap **Remove** from the pop-up menu

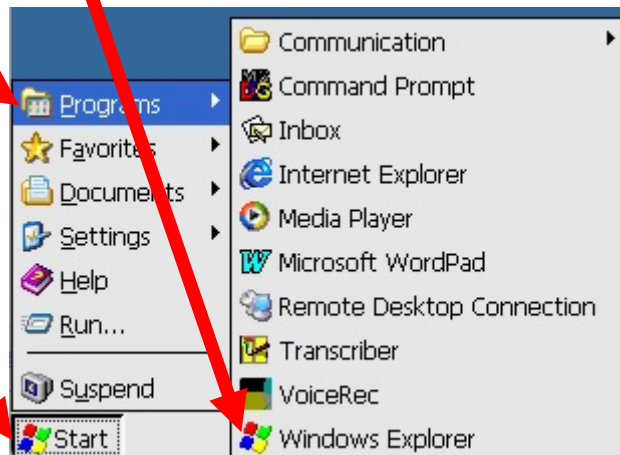


Tap **Yes** to confirm removal.



Step #3. Remove Remote Machining Application Folder

Tap **Start Menu, Programs, Windows Explorer**.



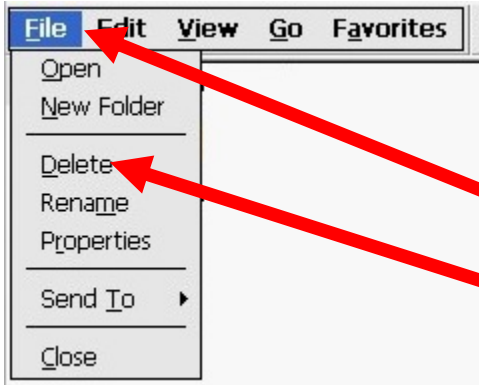
Locate the folder named **Storage Card** shown as:  Storage Card or

Double-tap to **open Storage Card** folder



Locate the folder named **RM** shown as:  RM or

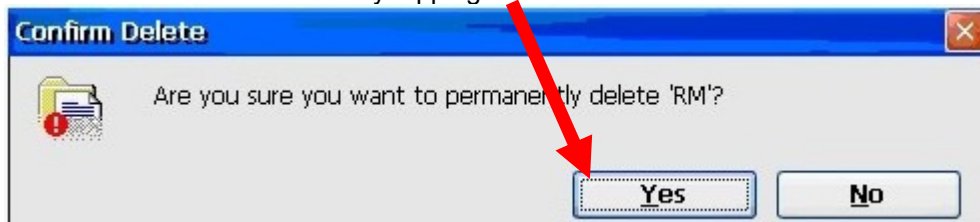
Tap (once) to **select RM** folder



Tap the **File** menu

Tap **Delete**

Confirm deletion of **RM** folder by tapping **Yes**



The uninstall is now complete.