

REMOTE MACHINING™

REMOTE CNC ACCESS

Makino Pro 5 Remote Machining Quick Start Installation Guide

If you meet both of the following requirements you can use this simple Quick Start Installation Guide to instantly get up and running with Remote Machining:



Requirement #1

Your Makino Pro 5 Mill is attached to your network and correctly configured for internet access.

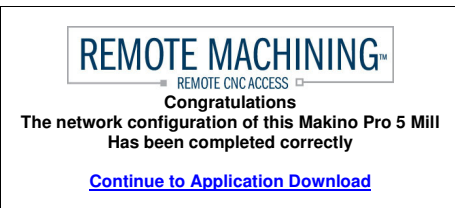
Requirement #2

Your Makino Pro 5 Mill contains a MIPS processor and is running Windows CE 4.
Most newer machines meet this requirement.

Step #1. Application Installation

Click  Start Menu, Programs, Internet Explorer. 
In the Address field, enter: oximf.cc and hit the Input key.

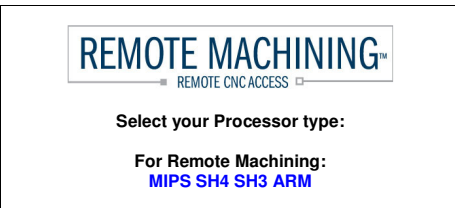
If the network configuration is correct and complete you will see the following web-site displayed:



If the above web-site is not displayed you may possibly not meet **Requirement #1** and should refer to the complete Makino Pro 5 Remote Machining Installation Procedure

Click the [Continue to Application Download](#) link.

The following page will be displayed:



Under the For Remote Machining heading, click on the MIPS link

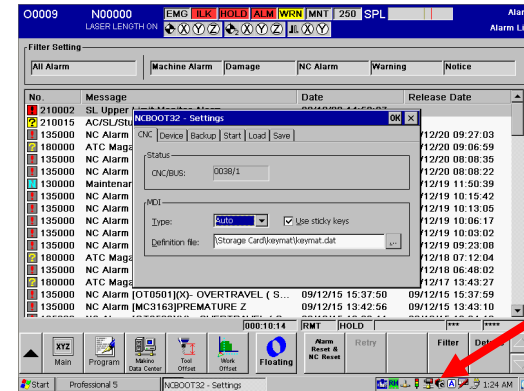
After selecting the link a new window will open. Within this new window select the Run or Open option and click OK.


Correct installation will be indicated by the  icon in the lower right system tray area.

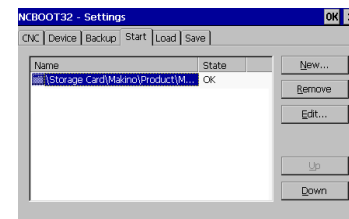
If you receive an error message you may possibly not meet **Requirement #2** and should refer to the complete Makino Pro 5 Remote Machining Installation Procedure

Step #2. Configure Remote Machining for Startup

If the NCBOOT32 screens do not appear exactly as shown here you may possibly not meet **Requirement #2** and should refer to the complete Makino Pro 5 Remote Machining Installation Procedure.

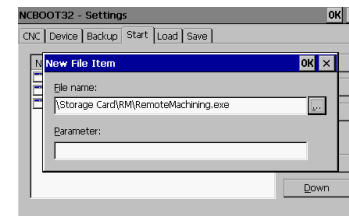



Locate the NCBOOT32 icon  in the lower right system tray area to open the NCBOOT configuration window.



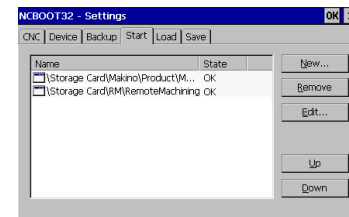
Click the Start tab.

Click the New button.



Use the browse button  to navigate to the RemoteMachining.exe program in the RM folder on the Storage Card:
\\Storage Card\RM\RemoteMachining.exe

After the correct path is displayed in the File Name field click OK.



Use the Up and Down buttons to assure that the Remote Machining entry is below the Makino entry as shown.

Click OK in the upper right hand corner of the NCBOOT32 Settings window to close it.

The installation is complete.